

EDITION ONE - MAY 1999

Statistics Research Branch

A Government Statistical Publication

CONTENTS

Page Number

Introduction 1

What is the IDBR?	1
Why is it needed?	1
Business information held on the IDBR	1
How new businesses are brought onto the IDBR	2
Who uses the IDBR?	2
Who can use the IDBR?	3
Disclosure of statistical information held on the IDBR	3

Information available from the IDBR

Businesses and employees in Northern Ireland	4
Businesses in District Council Areas	9
Comparisons with Great Britain	25
VAT registrations and de-registrations	26
Foreign Ownership analyses	28

Further information 31

Annexes

Annex 1 IDBR Structure	32
Annex 2 Glossary of IDBR Terms and Abbreviations	33

INTRODUCTION

What is the IDBR?

The Inter Departmental Business Register (IDBR) was introduced in 1994 and became fully operational in 1995. It is located in the Office for National Statistics (ONS) in Newport, South Wales and combines the former Central Statistical Office's VAT based business register and the former Employment Department's employment statistics system, which was based on employers' PAYE schemes. This statistical register comprises 2 million UK enterprises (the statistical term that most closely equates to a business). Approximately 51,500 of these enterprises are in Northern Ireland. The register comprises companies, sole proprietors, partnerships, public authorities, central government departments, local authorities and non-profit making organisations. Its objective is to maintain an integrated and comprehensive register of all businesses to support statistical inquiries and promote consistency in government statistics. It is a dynamic register which is updated daily to reflect up-to-date information collected from various economic surveys and inquiries. The IDBR provides 98% coverage of the economy. All sectors are covered, although no extensive analysis is available for agriculture. Areas not covered include some very small businesses (such as self-employed persons, those businesses without employees and which have a low turnover) and some non-profit making organisations. IDBR section in Statistics Research Branch, DED is responsible for maintaining the Northern Ireland element of this UK-wide register so that it can be used as the sampling frame for Government business surveys.

Why is it needed?

The IDBR enables us to conduct efficient and cost effective inquiries whilst minimising the burden on businesses. It is used for both national accounts and labour market statistics, as well as providing basic information on the structure of the economy (for example, business births and deaths). In short, it is used in four main ways:-

- w to select the businesses to be included in the inquiries,
- w to mail forms,
- w to enable estimates to be made for businesses who do not respond (imputation) or who were not asked to participate in any particular inquiry (grossing up), and
- w to produce analyses.

The register must therefore be comprehensive in coverage, accurate, up-to-date and contain the minimum amount of duplication.

Business information held on the IDBR

The main business data held are name, address, standard industrial classification (SIC(92)), employment and turnover. This information is supplemented by:

- w Legal Status (Company, Partnership, Sole proprietor etc.)
- w Parent company information - what businesses they own.

- w Country of ownership details.
- w Company registration number (CRN).
- w Value of goods traded with EU Member States from Intrastat.
- w Inquiry history - what statistical inquiries the business has been selected for since the IDBR became fully operational.
- w Inquiry specific address - a business may have two distinct sites, for example, one for production activity and the other for research and development. The business may want inquiry forms solely relating to research and development to be sent directly to that site and thus inquiry specific address details are created on the IDBR.
- w Special sampling facilities - markers to identify when a business should be included or excluded from a specific inquiry.

How new businesses are brought onto the IDBR

The main administrative sources for the IDBR are HM Customs and Excise for VAT information and Inland Revenue for PAYE information. HM Customs and Excise send ONS weekly information on VAT registrations and de-registrations and once a month a list of 'births' are forwarded to DED. Similarly Inland Revenue send ONS quarterly information on all PAYE schemes operating in the United Kingdom and DED receive a list of those in Northern Ireland. From these lists, IDBR section in Statistics Research Branch, DED continually "prove" new businesses in Northern Ireland. Approximately 5,000 forms per annum are issued to such businesses in order to obtain industry and employment details - in other words, to "prove" their existence for statistical purposes. Additional forms are issued as and when IDBR section become aware of new businesses opening, from sources such as the media and local knowledge. Once these businesses are proved they immediately become available for selection for various Government business surveys.

Who uses the IDBR?

- w Office for National Statistics - for statistical inquiries and analysis.
- w Department of Economic Development - for statistical inquiries and analysis. Currently DED is the only Northern Ireland Department with a link to the IDBR.
- w Department of the Environment (GB and NI) - for construction inquiries.
- w Department of Trade and Industry - for statistical inquiries and analysis, mainly relating to small firms. Information on VAT registrations and de-registrations published by DTI is contained later in this booklet.
- w Ministry of Agriculture, Fisheries and Food - for analysis.
- w Welsh Office - for statistical inquiries and analysis.
- w Scottish Office - for analysis.
- w Department of Education and Employment - for statistical inquiries.

Who can use the IDBR?

- w Central Government (GB and NI) - for statistical and analytical purposes.
- w Local authorities (GB only) - for planning purposes. Northern Ireland District Councils are currently prohibited from both using IDBR data and accessing the live register to view individual company details due to legislative constraints.
- w Research organisations - to carry out Government surveys under contract.
- w General public - analysis and publications which have undergone disclosure checks.

Disclosure of statistical information held on the IDBR

The information held on the IDBR is classified as "Restricted-Commercial", or "Commercial-in-Confidence" and thus data on individual businesses may not be disclosed. Disclosure of information contained on the register without the consent of the undertaking (business) is an offence under the Statistics of Trade and Employment (Northern Ireland) Order 1988.

However, various analyses of aggregate data can be run from the IDBR and samples are shown in the following pages. Figures in the tables have been rounded to the nearest five and thus may not add to totals. Where there are less than 20 businesses in a particular table cell, the employee figure has been suppressed to avoid disclosure. An asterisk (*) denotes that the figure is not shown due to there being either no businesses or employees in that particular cell or due to confidentiality constraints.

Notes:

1. No extensive analyses are available for the agricultural sector, as both MAFF and the Department of Agriculture for Northern Ireland (DANI) maintain their own registers and do not widely use the IDBR as the sampling frame for their surveys.
2. The terms "businesses" and "enterprises" are used synonymously throughout this booklet.
3. Employee figures held on the IDBR come from four main sources:
 - (i) the 1997 Northern Ireland Census of Employment, the figures having been loaded onto the IDBR in the autumn of 1998,
 - (ii) regular and miscellaneous proving exercises,
 - (iii) the Northern Ireland Quarterly Employment Survey, and
 - (iv) figures from other surveys conducted by Statistics Research Branch, DED and ONS (for example, the Annual Business Inquiry and the Annual Employment Survey.)

BUSINESSES AND EMPLOYEES IN NORTHERN IRELAND

Notes:

1. The figures in the following tables exclude (i) agriculture (but include animal husbandry service activities and hunting, trapping and game propagation) and (ii) a small number of businesses which are imputed to have 20 or more employees but for which DED have no information. Such businesses are commonly referred to as "unproven" and proving forms are regularly and continuously issued in order to obtain the relevant details.
2. The data in Figures 2 and 3 and Tables 2-7 are based on VAT registered businesses. Businesses without a link to VAT (i.e. those with only a PAYE reference) are excluded to avoid any possible duplication. This means that coverage in VAT exempt areas such as health, education and public administration is incomplete.

Table 1 shows that Northern Ireland is a small business economy, where 84.5% of businesses have less than 10 employees, compared with only 2.9% having 50 or more. However most employees work in large businesses - 44.2% work in a business that has 500 or more employees, just 0.3% of all businesses in Northern Ireland.

Table 1 Businesses and employees in Northern Ireland at February 1999

(a) Private and public sector

Sizeband	0.00¹	1-9	10-19	20-49	50-99	100-199	200-499	500+	Total
Businesses	11,680	25,680	3,435	2,110	660	325	190	120	44,205
Employees	0	79,635	45,770	63,155	44,645	44,900	57,550	266,390	602,040

1 This figure includes sole proprietors and partnerships, holding companies and those companies which are not yet trading, for example, if a factory is under construction.

(b) Private sector

Sizeband	0	1-9	10-19	20-49	50-99	100-199	200-499	500+	Total
Businesses	11,680	25,660	3,410	2,050	635	300	165	65	43,965
Employees	0	79,540	45,440	61,070	42,910	41,405	49,240	90,245	409,850

(c) Public sector

Sizeband	0	1-9	10-19	20-49	50-99	100-199	200-499	500+	Total
Businesses	0	20	25	60	25	25	25	55	240
Employees	0	95	335	2,085	1,735	3,490	8,310	176,140	192,190

It is clear to see the public sector's importance as a major employer in Northern Ireland - almost one out of every three employees works in the public sector (including both central and local government).

Figure 1 Employees in private and public sector businesses, 1998

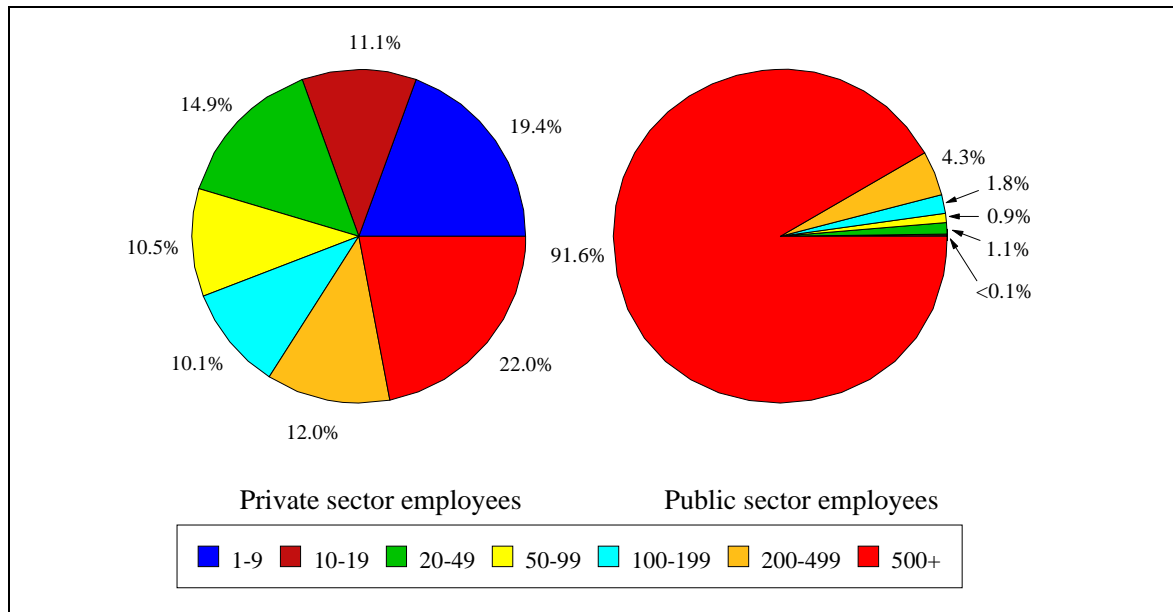


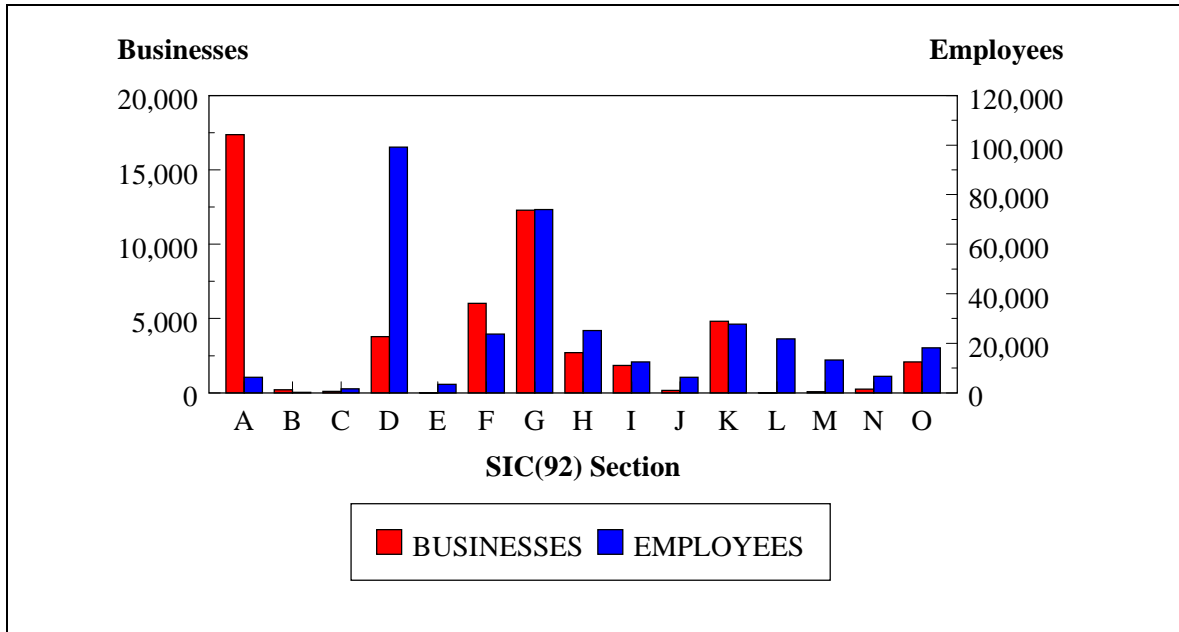
Table 2 Businesses and employees in Northern Ireland by broad industry group, 1998

SIC(92) Section	Businesses ¹	Employees
A Agriculture, Hunting and Forestry	17,370	6,290
B Fishing	220	230
C Mining and Quarrying	100	1,625
D Manufacturing	3,790	99,130
E Electricity, Gas and Water Supply	25	3,460
F Construction	6,025	23,730
G Wholesale & Retail Trade; Repair of Motor Vehicles, Motorcycles and Personal and Household Goods	12,285	73,985
H Hotels and Restaurants	2,705	25,215
I Transport, Storage and Communication	1,855	12,535
J Financial Intermediation	160	6,310
K Real Estate, Renting and Business Activities	4,815	27,710
L Public Administration and Defence; Compulsory Social Security	25	21,810
M Education	90	13,270
N Health and Social Work	255	6,630
O Other Community, Social and Personal Service Activities	2,080	18,235
Total	51,795	340,165

¹ Figures are based on VAT registered businesses only.

Figure 2 Private sector VAT registered businesses and their employees, 1998

In 1998, one third of private sector businesses registered for VAT in Northern Ireland were in agriculture. These businesses employed 1.8% of private sector employees. A further 23.7% of private sector businesses were in the wholesale and retail industries, employing just over one fifth of private sector employees. The manufacturing sector employed 29% of private sector employees.



See previous page for list of SIC(92) sections.

Figure 3 illustrates the share of businesses - split by employee sizeband - for the broad industry groups. It is evident that the majority of agriculture and fishing businesses are run by self-employed persons who have no employees. In both the manufacturing and service sector industries, the majority of businesses employ between 1 and 49 people. One quarter of the businesses in the electricity, gas and water supply industry group employ more than 50 people.

Figure 3 Percentage of VAT registered businesses by industry group and employee sizeband, 1998

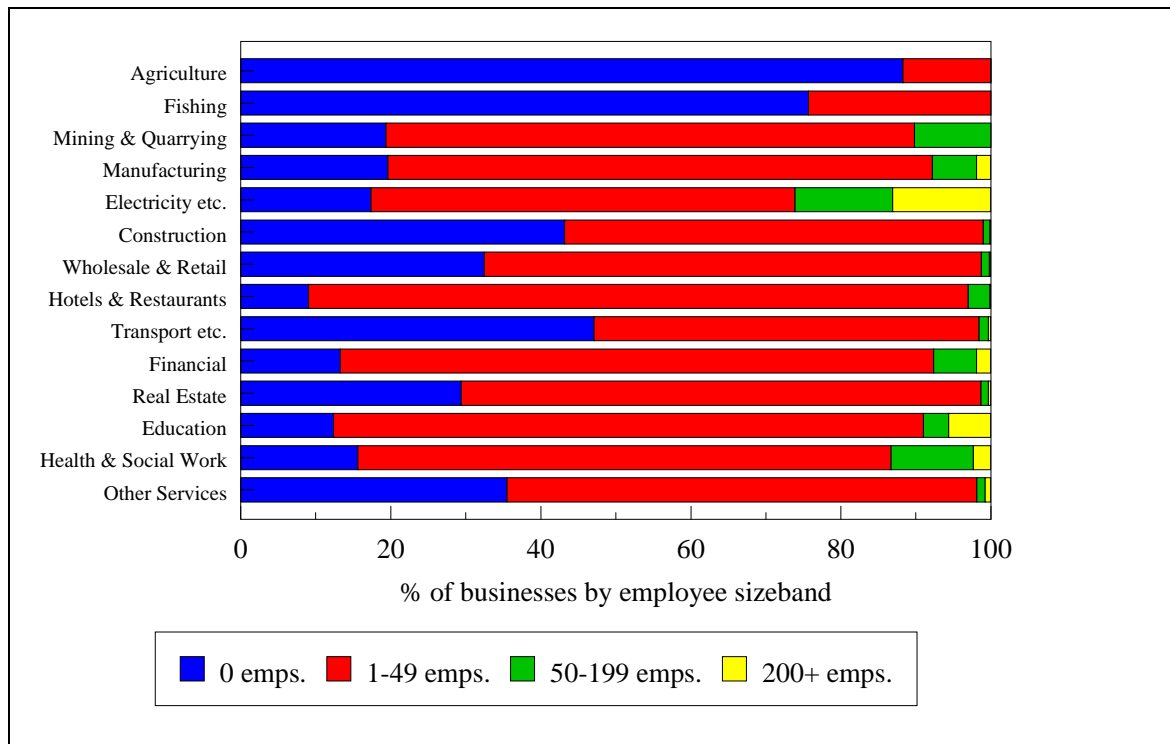


Table 3 VAT-based enterprises by industrial classification and turnover, 1998

55.9% of enterprises in Northern Ireland had a turnover of less than £100,000 in 1998, whereas only 7.3% had a turnover of £1,000,000 or more. The comparable figures in Great Britain were 49.2% and 8.6% respectively.

Industrial classification	Turnover (£'000)							Total
	1-49	50-99	100-249	250-499	500-999	1,000-4,999	5,000+	
Agriculture, forestry and fishing	11,350	3,180	2,310	525	150	70	10	17,590
Production:	610	710	855	535	395	555	250	3,910
<i>Of which, Mining/quarrying and utilities</i>	20	15	20	10	10	35	10	120
<i>Of which, Manufacturing</i>	590	695	835	525	385	520	240	3,785
Construction	1,520	1,550	1,405	680	430	375	65	6,025
Motor Trades	290	355	430	345	320	480	95	2,310
Wholesale	570	515	755	435	380	555	170	3,375
Retail	660	1,460	2,085	1,170	715	460	50	6,600
Hotels and Catering	190	830	980	370	205	120	10	2,705
Transport	460	480	335	170	100	150	30	1,725
Post & Telecommunications	50	35	25	10	5	5	0	130
Finance	50	30	25	15	5	10	15	160
Property and Business Services	1,380	1,300	1,105	500	295	205	25	4,815
Education	15	25	15	15	5	5	0	90
Health	60	60	55	45	25	10	0	255
Public admin. and other services	615	575	520	225	105	55	10	2,105
Northern Ireland	17,830	11,110	10,895	5,030	3,145	3,055	730	51,795
Great Britain	364,060	385,170	369,300	170,035	102,345	98,475	32,755	1,522,140
United Kingdom	381,890	396,280	380,195	175,065	105,490	101,530	33,485	1,573,935

Source: Size Analysis of United Kingdom Businesses (Business Monitor PA1003), 1998

BUSINESSES IN DISTRICT COUNCIL AREAS

Table 4 shows the number of businesses by broad industry group in each of the District Council Areas (DCA) in Northern Ireland. Agriculture dominates the economy in rural and border DCAs with services and retail businesses predominant in urban DCAs such as Belfast and Derry.

Table 5 shows the number of businesses by employee sizeband. Rural and border DCAs have the most number of VAT-registered businesses with 0 employees, with the majority of these being self-employed farmers. As one would expect, Belfast and Derry DCAs have half of those businesses which employ 500 or more people.

Table 6 shows the number of businesses and employees by broad industry group in each of the DCAs.

Note:Each business is allocated to a DCA based on the address where it is registered for VAT (normally the head office, if the business has a number of work sites). Thus, for example, one business is included in the figures for Fermanagh DCA, even though it has a number of stores throughout Northern Ireland.

Table 6 Businesses and employees by broad industry group and District Council, 1998

Antrim

SIC(92) Section	Businesses¹	Employees
A Agriculture, Hunting and Forestry	555	530
B Fishing	10	*
C Mining and Quarrying	*	*
D Manufacturing	110	2,940
E Electricity, Gas and Water Supply	*	*
F Construction	205	1,285
G Wholesale & Retail Trade; Repair of Motor Vehicles, Motorcycles and Personal and Household Goods	310	1,220
H Hotels and Restaurants	75	885
I Transport, Storage and Communication	120	710
J Financial Intermediation	*	*
K Real Estate, Renting and Business Activities	115	575
L Public Administration and Defence; Compulsory Social Security	*	*
M Education	*	*
N Health and Social Work	5	*
O Other Community, Social and Personal Service Activities	60	440
Total	1,575	11,920

1 Figures are based on VAT registered businesses only.

Ards

SIC(92) Section	Businesses¹	Employees
A Agriculture, Hunting and Forestry	535	275
B Fishing	55	45
C Mining and Quarrying	5	*
D Manufacturing	175	2,405
E Electricity, Gas and Water Supply	*	*
F Construction	265	660
G Wholesale & Retail Trade; Repair of Motor Vehicles, Motorcycles and Personal and Household Goods	585	1,940
H Hotels and Restaurants	130	1,060
I Transport, Storage and Communication	45	95
J Financial Intermediation	10	*
K Real Estate, Renting and Business Activities	170	420
L Public Administration and Defence; Compulsory Social Security	*	*
M Education	5	*
N Health and Social Work	10	*
O Other Community, Social and Personal Service Activities	95	695
Total	2,090	7,800

1 Figures are based on VAT registered businesses only.

Armagh

SIC(92) Section	Businesses¹	Employees
A Agriculture, Hunting and Forestry	1,240	550
B Fishing	*	*
C Mining and Quarrying	5	*
D Manufacturing	145	1,545
E Electricity, Gas and Water Supply	*	*
F Construction	195	490
G Wholesale & Retail Trade; Repair of Motor Vehicles, Motorcycles and Personal and Household Goods	485	2,005
H Hotels and Restaurants	110	530
I Transport, Storage and Communication	120	595
J Financial Intermediation	5	*
K Real Estate, Renting and Business Activities	105	240
L Public Administration and Defence; Compulsory Social Security	*	*
M Education	*	*

N	Health and Social Work	5	*
O	Other Community, Social and Personal Service Activities	75	470
Total		2,495	6,725

1 Figures are based on VAT registered businesses only.

Ballymena

SIC(92) Section		Businesses ¹	Employees
A	Agriculture, Hunting and Forestry	940	395
B	Fishing	*	*
C	Mining and Quarrying	5	*
D	Manufacturing	130	2,785
E	Electricity, Gas and Water Supply	*	*
F	Construction	260	1,065
G	Wholesale & Retail Trade; Repair of Motor Vehicles, Motorcycles and Personal and Household Goods	500	2,260
H	Hotels and Restaurants	105	660
I	Transport, Storage and Communication	70	205
J	Financial Intermediation	5	*
K	Real Estate, Renting and Business Activities	150	1,845
L	Public Administration and Defence; Compulsory Social Security	*	*
M	Education	*	*
N	Health and Social Work	10	*
O	Other Community, Social and Personal Service Activities	50	590
Total		2,225	9,990

1 Figures are based on VAT registered businesses only.

Ballymoney

SIC(92) Section		Businesses ¹	Employees
A	Agriculture, Hunting and Forestry	560	200
B	Fishing	*	*
C	Mining and Quarrying	*	55
D	Manufacturing	55	965
E	Electricity, Gas and Water Supply	*	*
F	Construction	135	415
G	Wholesale & Retail Trade; Repair of Motor Vehicles, Motorcycles and Personal and Household Goods	240	800
H	Hotels and Restaurants	35	190
I	Transport, Storage and Communication	35	165
J	Financial Intermediation	*	*
K	Real Estate, Renting and Business Activities	50	455
L	Public Administration and Defence; Compulsory Social Security	*	*
M	Education	*	*
N	Health and Social Work	5	*
O	Other Community, Social and Personal Service Activities	10	155
Total		1,125	3,420

1 Figures are based on VAT registered businesses only.

Banbridge

SIC(92) Section		Businesses ¹	Employees
A	Agriculture, Hunting and Forestry	785	305
B	Fishing	*	*
C	Mining and Quarrying	55	115
D	Manufacturing	100	1,145
E	Electricity, Gas and Water Supply	*	*
F	Construction	215	810

G	Wholesale & Retail Trade; Repair of Motor Vehicles, Motorcycles and Personal and Household Goods	300	1,080
H	Hotels and Restaurants	70	465
I	Transport, Storage and Communication	70	185
J	Financial Intermediation	*	*
K	Real Estate, Renting and Business Activities	90	305
L	Public Administration and Defence; Compulsory Social Security	*	*
M	Education	*	*
N	Health and Social Work	10	*
O	Other Community, Social and Personal Service Activities	45	220
Total		1,695	4,735

1 Figures are based on VAT registered businesses only.

Belfast

SIC(92) Section	Businesses ¹	Employees	
A	Agriculture, Hunting and Forestry	25	65
B	Fishing	*	*
C	Mining and Quarrying	5	*
D	Manufacturing	555	18,745
E	Electricity, Gas and Water Supply	5	*
F	Construction	485	3,475
G	Wholesale & Retail Trade; Repair of Motor Vehicles, Motorcycles and Personal and Household Goods	2,050	20,880
H	Hotels and Restaurants	445	7,250
I	Transport, Storage and Communication	245	6,390
J	Financial Intermediation	75	6,055
K	Real Estate, Renting and Business Activities	1,590	13,895
L	Public Administration and Defence; Compulsory Social Security	10	*
M	Education	30	9,940
N	Health and Social Work	50	2,125
O	Other Community, Social and Personal Service Activities	495	6,685
Total		6,065	114,980

1 Figures are based on VAT registered businesses only.

Carrickfergus

SIC(92) Section	Businesses ¹	Employees	
A	Agriculture, Hunting and Forestry	75	10
B	Fishing	*	*
C	Mining and Quarrying	*	*
D	Manufacturing	65	1,400
E	Electricity, Gas and Water Supply	0	*
F	Construction	70	275
G	Wholesale & Retail Trade; Repair of Motor Vehicles, Motorcycles and Personal and Household Goods	170	620
H	Hotels and Restaurants	40	430
I	Transport, Storage and Communication	10	*
J	Financial Intermediation	*	*
K	Real Estate, Renting and Business Activities	70	190
L	Public Administration and Defence; Compulsory Social Security	*	*
M	Education	5	*
N	Health and Social Work	*	*
O	Other Community, Social and Personal Service Activities	30	270
Total		545	3,925

1 Figures are based on VAT registered businesses only.

Castlereagh

SIC(92) Section	Businesses ¹	Employees	
A	Agriculture, Hunting and Forestry	95	85

B	Fishing	*	*
C	Mining and Quarrying	*	*
D	Manufacturing	105	3,790
E	Electricity, Gas and Water Supply	*	*
F	Construction	170	670
G	Wholesale & Retail Trade; Repair of Motor Vehicles, Motorcycles and Personal and Household Goods	320	1,285
H	Hotels and Restaurants	40	450
I	Transport, Storage and Communication	40	55
J	Financial Intermediation	5	*
K	Real Estate, Renting and Business Activities	120	485
L	Public Administration and Defence; Compulsory Social Security	*	*
M	Education	*	*
N	Health and Social Work	10	230
O	Other Community, Social and Personal Service Activities	65	640
Total		980	7,930

1 Figures are based on VAT registered businesses only.

Coleraine

SIC(92) Section		Businesses¹	Employees
A	Agriculture, Hunting and Forestry	575	230
B	Fishing	*	*
C	Mining and Quarrying	*	*
D	Manufacturing	115	4,610
E	Electricity, Gas and Water Supply	*	*
F	Construction	185	840
G	Wholesale & Retail Trade; Repair of Motor Vehicles, Motorcycles and Personal and Household Goods	450	2,190
H	Hotels and Restaurants	130	1,420
I	Transport, Storage and Communication	45	185
J	Financial Intermediation	*	*
K	Real Estate, Renting and Business Activities	145	560
L	Public Administration and Defence; Compulsory Social Security	*	*
M	Education	*	*
N	Health and Social Work	10	*
O	Other Community, Social and Personal Service Activities	60	775
Total		1,720	13,835

1 Figures are based on VAT registered businesses only.

Cookstown

SIC(92) Section		Businesses ¹	Employees
A	Agriculture, Hunting and Forestry	895	260
B	Fishing	20	10
C	Mining and Quarrying	5	*
D	Manufacturing	115	1,545
E	Electricity, Gas and Water Supply	*	*
F	Construction	195	485
G	Wholesale & Retail Trade; Repair of Motor Vehicles, Motorcycles and Personal and Household Goods	325	1,035
H	Hotels and Restaurants	70	580
I	Transport, Storage and Communication	65	200
J	Financial Intermediation	*	*
K	Real Estate, Renting and Business Activities	65	190
L	Public Administration and Defence; Compulsory Social Security	*	*
M	Education	*	*
N	Health and Social Work	5	*
O	Other Community, Social and Personal Service Activities	30	210
Total		1,795	4,630

1 Figures are based on VAT registered businesses only.

Craigavon

SIC(92) Section		Businesses ¹	Employees
A	Agriculture, Hunting and Forestry	445	245
B	Fishing	5	*
C	Mining and Quarrying	*	*
D	Manufacturing	235	10,540
E	Electricity, Gas and Water Supply	*	*
F	Construction	260	1,225
G	Wholesale & Retail Trade; Repair of Motor Vehicles, Motorcycles and Personal and Household Goods	600	3,490
H	Hotels and Restaurants	110	900
I	Transport, Storage and Communication	85	300
J	Financial Intermediation	5	*
K	Real Estate, Renting and Business Activities	195	955
L	Public Administration and Defence; Compulsory Social Security	*	*
M	Education	5	*
N	Health and Social Work	10	*
O	Other Community, Social and Personal Service Activities	105	860
Total		2,055	18,725

1 Figures are based on VAT registered businesses only.

Derry

SIC(92) Section		Businesses ¹	Employees
A	Agriculture, Hunting and Forestry	370	50
B	Fishing	*	*
C	Mining and Quarrying	*	*
D	Manufacturing	180	11,735
E	Electricity, Gas and Water Supply	*	*
F	Construction	265	1,395
G	Wholesale & Retail Trade; Repair of Motor Vehicles, Motorcycles and Personal and Household Goods	595	2,525
H	Hotels and Restaurants	135	1,320
I	Transport, Storage and Communication	65	240
J	Financial Intermediation	5	*
K	Real Estate, Renting and Business Activities	265	1,530

L	Public Administration and Defence; Compulsory Social Security	*	*
M	Education	5	*
N	Health and Social Work	10	*
O	Other Community, Social and Personal Service Activities	100	930
Total		1,995	20,035

1 Figures are based on VAT registered businesses only.

Down

SIC(92) Section		Businesses¹	Employees
A	Agriculture, Hunting and Forestry	755	250
B	Fishing	25	5
C	Mining and Quarrying	5	*
D	Manufacturing	120	1,265
E	Electricity, Gas and Water Supply	*	*
F	Construction	355	915
G	Wholesale & Retail Trade; Repair of Motor Vehicles, Motorcycles and Personal and Household Goods	470	1,830
H	Hotels and Restaurants	150	1,045
I	Transport, Storage and Communication	45	150
J	Financial Intermediation	5	*
K	Real Estate, Renting and Business Activities	145	310
L	Public Administration and Defence; Compulsory Social Security	*	*
M	Education	*	*
N	Health and Social Work	10	*
O	Other Community, Social and Personal Service Activities	85	570
Total		2,165	6,545

1 Figures are based on VAT registered businesses only.

Dungannon

SIC(92) Section		Businesses¹	Employees
A	Agriculture, Hunting and Forestry	1,300	435
B	Fishing	*	*
C	Mining and Quarrying	5	*
D	Manufacturing	210	3,420
E	Electricity, Gas and Water Supply	*	*
F	Construction	245	520
G	Wholesale & Retail Trade; Repair of Motor Vehicles, Motorcycles and Personal and Household Goods	470	2,290
H	Hotels and Restaurants	95	555
I	Transport, Storage and Communication	75	195
J	Financial Intermediation	5	*
K	Real Estate, Renting and Business Activities	125	420
L	Public Administration and Defence; Compulsory Social Security	*	*
M	Education	*	*
N	Health and Social Work	*	*
O	Other Community, Social and Personal Service Activities	60	120
Total		2,595	8,770

1 Figures are based on VAT registered businesses only.

Fermanagh

SIC(92) Section		Businesses¹	Employees
A	Agriculture, Hunting and Forestry	1,900	225
B	Fishing	*	*
C	Mining and Quarrying	5	*
D	Manufacturing	120	2,280

E	Electricity, Gas and Water Supply	*	*
F	Construction	245	675
G	Wholesale & Retail Trade; Repair of Motor Vehicles, Motorcycles and Personal and Household Goods	550	7,325
H	Hotels and Restaurants	130	900
I	Transport, Storage and Communication	50	165
J	Financial Intermediation	5	*
K	Real Estate, Renting and Business Activities	110	505
L	Public Administration and Defence; Compulsory Social Security	*	*
M	Education	5	*
N	Health and Social Work	20	485
O	Other Community, Social and Personal Service Activities	70	490
Total		3,205	13,235

1 Figures are based on VAT registered businesses only.

Larne

SIC(92) Section		Businesses¹	Employees
A	Agriculture, Hunting and Forestry	390	85
B	Fishing	5	*
C	Mining and Quarrying	5	*
D	Manufacturing	55	4,545
E	Electricity, Gas and Water Supply	5	*
F	Construction	85	120
G	Wholesale & Retail Trade; Repair of Motor Vehicles, Motorcycles and Personal and Household Goods	210	910
H	Hotels and Restaurants	65	565
I	Transport, Storage and Communication	55	220
J	Financial Intermediation	5	*
K	Real Estate, Renting and Business Activities	55	115
L	Public Administration and Defence; Compulsory Social Security	*	*
M	Education	*	*
N	Health and Social Work	*	*
O	Other Community, Social and Personal Service Activities	35	320
Total		970	7,420

1 Figures are based on VAT registered businesses only.

Limavady

SIC(92) Section		Businesses¹	Employees
A	Agriculture, Hunting and Forestry	430	200
B	Fishing	*	*
C	Mining and Quarrying	*	*
D	Manufacturing	55	780
E	Electricity, Gas and Water Supply	*	*
F	Construction	185	555
G	Wholesale & Retail Trade; Repair of Motor Vehicles, Motorcycles and Personal and Household Goods	180	790
H	Hotels and Restaurants	55	525
I	Transport, Storage and Communication	15	*
J	Financial Intermediation	*	*
K	Real Estate, Renting and Business Activities	45	95
L	Public Administration and Defence; Compulsory Social Security	*	*
M	Education	*	*
N	Health and Social Work	5	*
O	Other Community, Social and Personal Service Activities	20	40
Total		995	3,195

1 Figures are based on VAT registered businesses only.

Lisburn

SIC(92) Section	Businesses ¹	Employees
A Agriculture, Hunting and Forestry	630	460
B Fishing	*	*
C Mining and Quarrying	5	*
D Manufacturing	290	5,390
E Electricity, Gas and Water Supply	*	*
F Construction	425	1,560
G Wholesale & Retail Trade; Repair of Motor Vehicles, Motorcycles and Personal and Household Goods	760	4,900
H Hotels and Restaurants	120	1,385
I Transport, Storage and Communication	135	300
J Financial Intermediation	5	*
K Real Estate, Renting and Business Activities	290	1,100
L Public Administration and Defence; Compulsory Social Security	*	*
M Education	5	*
N Health and Social Work	15	*
O Other Community, Social and Personal Service Activities	160	805
Total	2,845	16,215

1 Figures are based on VAT registered businesses only.

Magherafelt

SIC(92) Section	Businesses ¹	Employees
A Agriculture, Hunting and Forestry	815	265
B Fishing	*	*
C Mining and Quarrying	10	*
D Manufacturing	140	2,100
E Electricity, Gas and Water Supply	*	*
F Construction	300	1,335
G Wholesale & Retail Trade; Repair of Motor Vehicles, Motorcycles and Personal and Household Goods	290	1,070
H Hotels and Restaurants	65	195
I Transport, Storage and Communication	75	115
J Financial Intermediation	*	*
K Real Estate, Renting and Business Activities	80	150
L Public Administration and Defence; Compulsory Social Security	*	*
M Education	*	*
N Health and Social Work	10	*
O Other Community, Social and Personal Service Activities	25	200
Total	1,820	5,920

1 Figures are based on VAT registered businesses only.

Moyle

SIC(92) Section	Businesses ¹	Employees
A Agriculture, Hunting and Forestry	395	55
B Fishing	5	*
C Mining and Quarrying	*	*
D Manufacturing	20	185
E Electricity, Gas and Water Supply	*	*
F Construction	80	155
G Wholesale & Retail Trade; Repair of Motor Vehicles, Motorcycles and Personal and Household Goods	130	460
H Hotels and Restaurants	50	290
I Transport, Storage and Communication	15	*
J Financial Intermediation	*	*

K	Real Estate, Renting and Business Activities	15	75
L	Public Administration and Defence; Compulsory Social Security	*	*
M	Education	*	*
N	Health and Social Work	*	*
O	Other Community, Social and Personal Service Activities	10	*
Total		730	1,375

1 Figures are based on VAT registered businesses only.

Newry & Mourne

SIC(92) Section		Businesses¹	Employees
A	Agriculture, Hunting and Forestry	1,100	225
B	Fishing	85	55
C	Mining and Quarrying	10	*
D	Manufacturing	230	5,190
E	Electricity, Gas and Water Supply	*	*
F	Construction	425	1,735
G	Wholesale & Retail Trade; Repair of Motor Vehicles, Motorcycles and Personal and Household Goods	655	5,335
H	Hotels and Restaurants	155	840
I	Transport, Storage and Communication	165	590
J	Financial Intermediation	10	*
K	Real Estate, Renting and Business Activities	170	1,270
L	Public Administration and Defence; Compulsory Social Security	*	*
M	Education	5	*
N	Health and Social Work	15	*
O	Other Community, Social and Personal Service Activities	100	955
Total		3,130	16,490

1 Figures are based on VAT registered businesses only.

Newtownabbey

SIC(92) Section		Businesses¹	Employees
A	Agriculture, Hunting and Forestry	180	185
B	Fishing	*	*
C	Mining and Quarrying	*	*
D	Manufacturing	160	3,195
E	Electricity, Gas and Water Supply	*	*
F	Construction	190	1,125
G	Wholesale & Retail Trade; Repair of Motor Vehicles, Motorcycles and Personal and Household Goods	505	3,960
H	Hotels and Restaurants	75	755
I	Transport, Storage and Communication	90	795
J	Financial Intermediation	5	*
K	Real Estate, Renting and Business Activities	185	735
L	Public Administration and Defence; Compulsory Social Security	*	*
M	Education	*	*
N	Health and Social Work	10	*
O	Other Community, Social and Personal Service Activities	85	395
Total		1,490	12,530

1 Figures are based on VAT registered businesses only.

North Down

SIC(92) Section		Businesses¹	Employees
A	Agriculture, Hunting and Forestry	65	55
B	Fishing	5	*
C	Mining and Quarrying	*	*

D	Manufacturing	125	1,750
E	Electricity, Gas and Water Supply	*	*
F	Construction	160	480
G	Wholesale & Retail Trade; Repair of Motor Vehicles, Motorcycles and Personal and Household Goods	440	1,810
H	Hotels and Restaurants	105	1,360
I	Transport, Storage and Communication	40	130
J	Financial Intermediation	10	*
K	Real Estate, Renting and Business Activities	290	735
L	Public Administration and Defence; Compulsory Social Security	*	*
M	Education	10	*
N	Health and Social Work	15	*
O	Other Community, Social and Personal Service Activities	135	790
Total		1,400	8,280

1 Figures are based on VAT registered businesses only.

Omagh

SIC(92) Section		Businesses¹	Employees
A	Agriculture, Hunting and Forestry	1,495	310
B	Fishing	*	*
C	Mining and Quarrying	10	*
D	Manufacturing	90	1,050
E	Electricity, Gas and Water Supply	*	*
F	Construction	270	785
G	Wholesale & Retail Trade; Repair of Motor Vehicles, Motorcycles and Personal and Household Goods	395	1,075
H	Hotels and Restaurants	75	470
I	Transport, Storage and Communication	40	95
J	Financial Intermediation	*	*
K	Real Estate, Renting and Business Activities	125	445
L	Public Administration and Defence; Compulsory Social Security	*	*
M	Education	*	*
N	Health and Social Work	10	*
O	Other Community, Social and Personal Service Activities	50	530
Total		2,560	5,105

1 Figures are based on VAT registered businesses only.

Strabane

SIC(92) Section		Businesses¹	Employees
A	Agriculture, Hunting and Forestry	830	350
B	Fishing	*	*
C	Mining and Quarrying	5	*
D	Manufacturing	80	3,825
E	Electricity, Gas and Water Supply	*	*
F	Construction	160	680
G	Wholesale & Retail Trade; Repair of Motor Vehicles, Motorcycles and Personal and Household Goods	290	900
H	Hotels and Restaurants	65	190
I	Transport, Storage and Communication	30	65
J	Financial Intermediation	*	*
K	Real Estate, Renting and Business Activities	35	110
L	Public Administration and Defence; Compulsory Social Security	*	*
M	Education	*	*
N	Health and Social Work	5	*
O	Other Community, Social and Personal Service Activities	30	55
Total		1,535	6,430

COMPARISONS WITH GREAT BRITAIN

Table 7 Number of VAT-based businesses by broad industry group, 1998

Northern Ireland's reliance on the agricultural industry is evident in Table 7. Proportionately, there are almost four times as many agricultural businesses in Northern Ireland than in Great Britain. The greater diversity in Great Britain's economy is also evident, with its higher proportion of businesses in service sector industries such as retail and property and business services.

Broad Industry Group	Northern Ireland	%	Great Britain	%	United Kingdom	%
Agriculture	17,590	34.0	132,945	8.7	150,535	9.6
Mining/quarrying and utilities	120	0.2	1,495	0.1	1,615	0.1
Manufacturing	3,785	7.3	153,305	10.1	157,095	10.0
Construction	6,025	11.6	161,545	10.6	167,575	10.6
Motor trades	2,310	4.5	66,875	4.4	69,175	4.4
Wholesale	3,375	30.3	110,540	7.3	113,915	7.2
Retail	6,600	6.5	199,090	13.1	205,685	13.1
Hotels & Catering	2,705	5.2	101,085	6.6	103,785	6.6
Transport	1,725	3.3	61,090	4.0	62,815	4.0
Post & Telecommunications	130	0.3	8,535	0.6	8,675	0.6
Finance	160	0.3	11,465	0.8	11,610	0.7
Property & Business Services	4,815	9.3	361,685	23.8	366,505	23.3
Education	90	0.2	7,235	0.5	7,320	0.5
Health	255	0.5	8,905	0.6	9,155	0.6
Public Administration and Other Services	2,105	4.1	136,360	9.0	138,465	8.8
Total	51,795		1,522,145		1,573,935	

Source: Size Analysis of United Kingdom Businesses (Business Monitor PA1003), 1998

VAT REGISTRATIONS AND DE-REGISTRATIONS

Table 8 shows the number of businesses that registered and de-registered for VAT in the regions of the United Kingdom for the period 1994-1997. VAT registrations and de-registrations are the best official guide to the pattern of business start-ups and closures. Coverage includes both companies and self-employed run businesses but excludes those businesses that operate below the VAT threshold.

Table 8 VAT registrations and de-registrations by UK region, 1994-1997

Region	1994		1995		1996		1997	
	Reg.	De-reg.	Reg.	De-reg.	Reg.	De-reg.	Reg.	De-reg.
North East	4,455	5,150	4,085	5,055	4,085	4,505	4,170	4,390
North West	16,470	19,490	15,915	18,435	16,475	17,245	18,120	17,120
North West (GOR)	13,950	16,665	13,480	15,535	13,695	14,430	14,880	14,515
Merseyside	2,520	2,825	2,435	2,900	2,780	2,815	3,240	2,605
Yorks & The Humber	11,620	13,565	11,095	13,210	11,315	12,000	11,825	12,250
East Midlands	10,860	11,905	10,695	11,445	10,845	11,365	11,745	11,235
West Midlands	13,665	15,215	13,290	14,670	13,295	13,670	13,635	13,885
Eastern	16,070	18,115	16,010	16,530	16,140	15,600	18,270	15,750
London	32,530	33,240	32,650	29,055	34,055	29,320	37,165	28,295
South East (GOR)	27,360	29,680	26,470	27,085	27,055	25,680	29,955	25,665
South West	14,155	16,960	12,955	15,465	13,840	14,315	15,315	14,400
England	147,190	163,325	143,165	150,965	147,105	143,705	160,200	142,990
Wales	6,280	8,545	5,985	7,125	6,105	6,750	6,240	6,320
Scotland	11,345	12,560	11,195	12,020	11,275	11,535	12,280	11,540
Northern Ireland	3,425	3,710	3,615	3,120	3,715	3,080	3,850	3,605
United Kingdom	168,240	188,140	163,960	173,230	168,200	165,065	182,570	164,455

Source: DTI SME Statistics Unit Press Release, August 1998

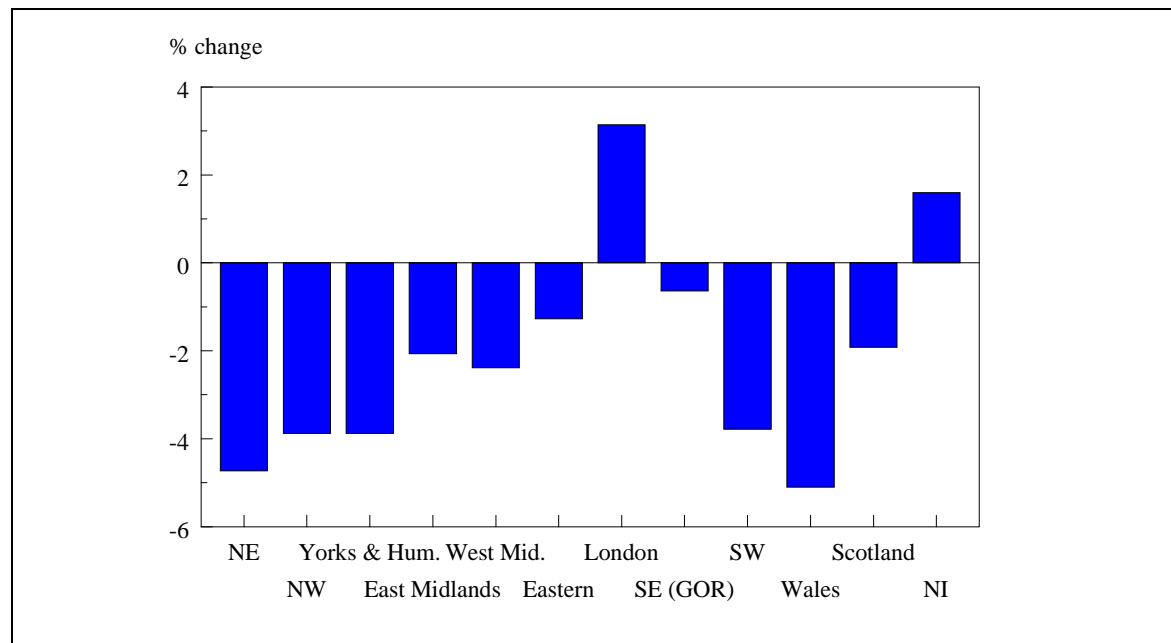
Outside London, Northern Ireland is the only region of the United Kingdom which has seen an increase in the number of businesses registered for VAT over the period 1994-1997 (Table 9 and Figure 3).

Table 9 Business stock: VAT registered enterprises by UK region, 1994-1997

Region	1994		1995		1996		1997	
	Stock	Net change	Stock	Net change	Stock	Net change	Stock	Net change
North East	44,120	-695	43,425	-970	42,455	-420	42,035	-220
North West	162,900	-3,020	159,875	-2,520	157,355	-770	156,585	1,000
North West (GOR)	140,245	-2,715	137,530	-2,055	135,475	-735	134,740	365
Merseyside	22,655	-305	22,345	-465	21,880	-35	21,845	635
Yorks & The Humber	122,410	-1,945	120,460	-2,115	118,350	-685	117,665	-425
East Midlands	111,795	-1,045	110,755	-750	110,005	-520	109,485	510
West Midlands	138,145	-1,550	136,595	-1,380	135,215	-375	134,840	-250
Eastern	159,490	-2,045	157,450	-520	156,930	540	157,470	2,520
London	242,175	-710	241,465	3,595	245,055	4,735	249,790	8,870
South East (GOR)	243,370	-2,320	241,055	-615	240,440	1,375	241,815	4,290
South West	152,870	-2,805	150,065	-2,510	147,560	-475	147,085	915
England	1,377,280	-16,135	1,361,145	-7,800	1,353,345	3,400	1,356,745	17,210
Wales	79,465	-2,265	77,200	-1,140	76,060	-645	75,415	-80
Scotland	119,825	-1,215	118,610	-825	117,785	-260	117,525	740
Northern Ireland	52,665	-285	52,380	495	52,875	635	53,510	245
United Kingdom	1,629,235	-19,900	1,609,335	-9,270	1,600,065	3,135	1,603,200	18,115

Source: DTI SME Statistics Unit Press Release, August 1998

Figure 4 Change (%) in business stock by UK region, 1994-1997



FOREIGN OWNERSHIP ANALYSES

Information from the market information company Dun and Bradstreet on foreign owned businesses operating in the United Kingdom is loaded onto the IDBR annually. Statistics Research Branch, DED supplement this with information from two sources: (i) the Industrial Development Board's (IDB) Cabinet List (a quarterly list which gives details of businesses which have received financial assistance from the IDB and its predecessors) and (ii) a list of publicly traded US companies with subsidiaries, affiliates or branch offices employing more than ten people in Northern Ireland, published by the Investor Responsibility Research Center, Washington D.C. (The IRRC is an independent, non-profit making research firm founded in 1972.) The following tables show some of the analyses from these combined sources.

Table 10 shows the number of foreign owned businesses and the employees within them operating in Northern Ireland over the last few years. In 1998, there were approximately 390 foreign owned businesses in Northern Ireland employing almost 57,500 people. Foreign owned businesses are therefore a key player in employing local people as they employ 9.5% of all employees in Northern Ireland. 21 countries had businesses operating in Northern Ireland with the Republic of Ireland and USA owning more than 100 businesses. These two countries accounted for 56.8% of employees in foreign owned businesses.

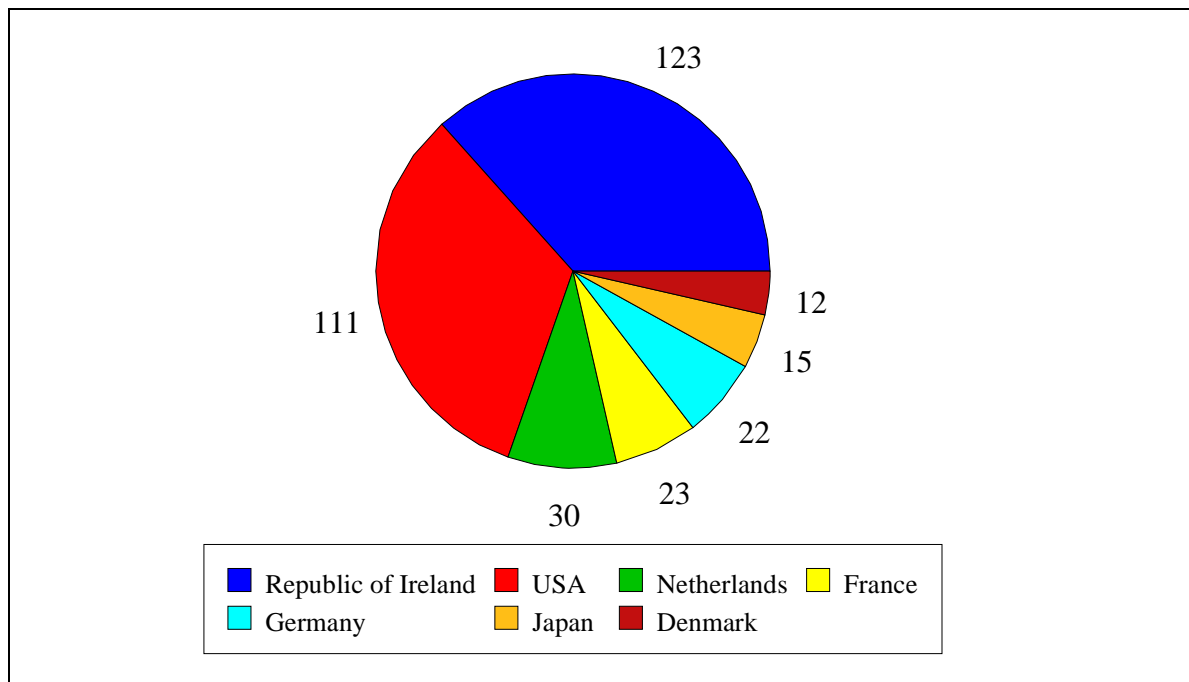
Notes:

- 1.** As the number of businesses is drawn from a number of sources, the actual numbers are given and are not disclosive. However the employee figures are taken from the IDBR and are thus subject to the usual confidentiality constraints.
- 2.** The 1998 figures are not directly comparable with earlier years as Dun and Bradstreet introduced a new system for collecting information on the country of ownership of businesses during the year.

Table 10 Number of foreign owned businesses and employees in Northern Ireland

Country	1996		1997		1998	
	Businesses	Employees	Businesses	Employees	Businesses	Employees
Republic of Ireland	100	12,365	109	15,740	123	15,405
USA	71	10,035	112	16,145	111	17,235
France	23	2,005	30	3,930	23	2,650
Netherlands	17	*	25	2,220	30	2,010
Germany	17	*	22	1,075	22	955
Denmark	13	*	8	*	12	*
Japan	11	*	12	*	15	*
Switzerland	10	*	7	*	5	*
Canada	8	*	7	*	9	*
Australia	7	*	7	*	6	*
South Korea	6	*	8	*	8	*
Sweden	4	*	5	*	2	*
Finland	3	*	3	*	3	*
Hong Kong	3	*	2	*	*	*
Belgium	3	*	4	*	5	*
South Africa	2	*	*	*	2	*
Luxembourg	2	*	2	*	*	*
Italy	1	*	1	*	1	*
Portugal	1	*	1	*	1	*
Norway	1	*	1	*	1	*
Liechtenstein	1	*	1	*	*	*
Channel Islands	*	*	*	*	5	*
Isle of Man	*	*	*	*	4	*
Malaysia	*	*	1	*	1	*
Total	304	42,810	368	55,850	389	57,465

Figure 5 Countries which have more than 10 businesses in Northern Ireland, 1998



FURTHER INFORMATION

If you have any further questions about the IDBR.

Contact: Ian Gallagher,
Statistics Research Branch, Department of Economic Development,
Netherleigh, Massey Avenue, Belfast BT4 2JP

Telephone: (01232) 529430
Fax: (01232) 529459
E-mail: ian.gallagher@dedni.gov.uk

If you would like ad-hoc analyses run from the IDBR.

Contact: Business Registers Unit, Room 1.062,
Office for National Statistics, Government Buildings,
Cardiff Road, Newport South Wales NP9 1XG

Telephone: (0800) 731 5761 or (01633) 813269
Fax: (01633) 812477
E-mail: claire.powell@ons.gov.uk

Please note that ONS will charge for this service and data will be subject to disclosure checks before being released.

For other information on economic statistics.

Contact: Statistics Research Branch, Department of Economic Development,
Room 118, Netherleigh, Massey Avenue, Belfast BT4 2JP

Telephone: (01232) 529399/529897/529494
Fax: (01232) 529459
Web site: <http://www.dedni.gov.uk/statsres/>

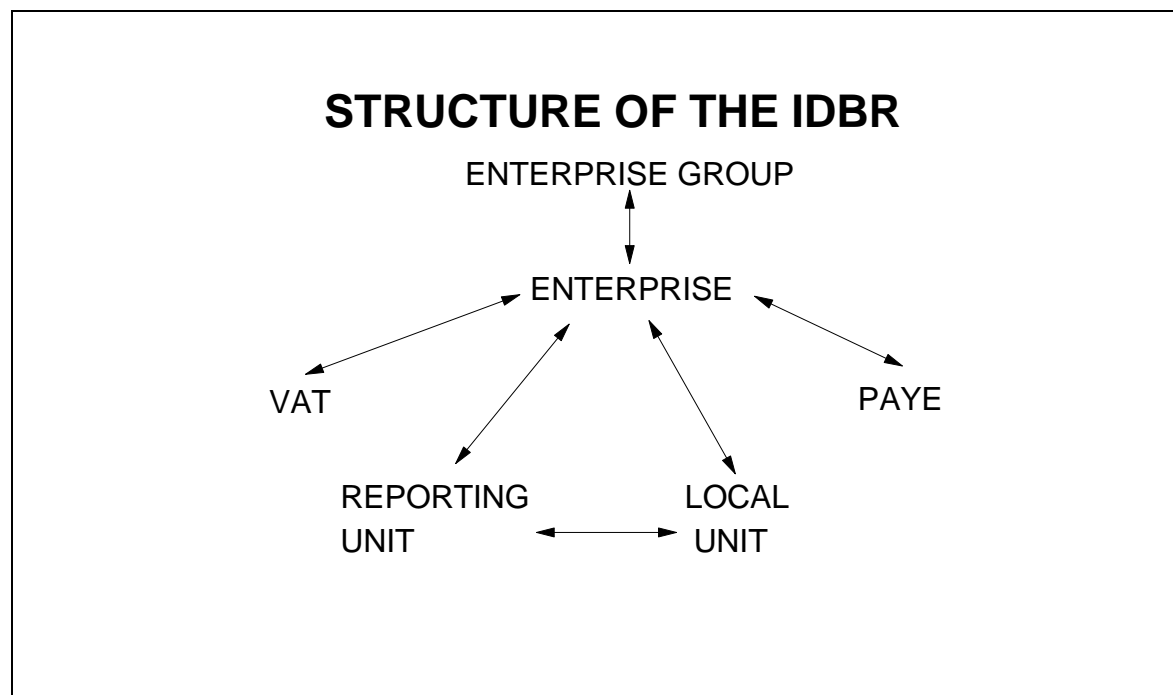
ANNEX 1 IDBR STRUCTURE

Business structures are complex and are based on administrative procedures that are often not suitable for statistical inquiries. The VAT unit is there simply to facilitate the collection of VAT and some employers maintain separate PAYE schemes for salaried and non-salaried workers, giving two administrative units for the same workplace. For these reasons the administrative data are mapped onto statistical units for the purpose of statistical inquiries.

Thus there are two types of business units on the IDBR - the administrative unit and the statistical unit. The administrative units are the VAT and PAYE units from which the statistical units (enterprise group, enterprise and local unit(s)) are generated. Finally the reporting unit holds the mailing address to which inquiry forms are sent, and displays summary information, such as the latest turnover figure, the number of local units and employees within the enterprise and a contact name and telephone/fax number (if available).

The structure of a business can be thought of as being made up of "layers," with the enterprise group forming the "top layer," therefore providing the overall picture of all enterprises within the group. The enterprise forms the next "layer" with data for an individual business collected from the administrative units ("lower layers") attached.

Information is received from the data sources (i.e. VAT, PAYE and local units) and fed up to the enterprise, and up to the enterprise group. The links between the various units can be seen in the diagram below and they are described in further detail in Annex 2.



ANNEX 2 GLOSSARY OF IDBR TERMS AND ABBREVIATIONS

The IDBR uses a number of terms to describe a business, which are explained below.

Enterprise Group

An enterprise group is a group of legal units/enterprises under common ownership. It contains aggregate information on the number of companies and employees in the group, as well as the total turnover and foreign ownership details. For example, Short Brothers plc and Belfast City Airport are in the same enterprise group.

Enterprise

An enterprise is the smallest combination of legal units under common ownership which have a certain degree of autonomy within an enterprise group. It is the statistical unit that most closely equates to a business. It holds aggregated information gathered from administrative and statistical sources within that enterprise to give an overall picture of what is going on in the business. For example, Short Brothers plc is an enterprise.

VAT

HM Customs and Excise notify ONS of all new businesses which are above the VAT threshold (£50,000 at 1 April 1998) and those businesses which are below the threshold but have chosen to register voluntarily for VAT. IDBR section receive a monthly list of such businesses in Northern Ireland and issue proving forms to them. Once the information is received, the IDBR is updated and the business then becomes available for selection for statistical inquiries.

PAYE

Inland Revenue notify ONS of all employers with employees earning above the income tax threshold (i.e. operating PAYE schemes). IDBR section receive a quarterly list of such companies in Northern Ireland and prove them in the same way as for VAT traders.

Local Unit

A local unit is an individual site (factory, shop, office, etc.) at which an enterprise conducts its business. For example, the Queens Island site of Short Brothers plc is a local unit.

Reporting Unit

The reporting unit holds the mailing address to which inquiry forms are sent, and displays summary information, such as the latest turnover figure, the number of local units and employees within the enterprise and a contact name and telephone/fax number (if available). It also holds information on what statistical inquiries the enterprise has been selected for. There are two types of reporting units in Northern Ireland - (i) an enterprise reporting unit reports for all the local units within the enterprise (for example, Short Brothers plc will include local units for the Queen's Island, Dunmurry and Newtownards sites) and (ii) a local unit list reporting unit reports on a specified list of local units and these usually distinguish multinational companies operating in Northern Ireland. For example, Marks and Spencer have one reporting unit for activity in Great Britain and another for activity in Northern Ireland.

Proved/Proven Unit

A proved/proven unit is any enterprise on the IDBR which has a live local unit attached to it. The employee information for the local unit(s) comes from sources such as the Northern Ireland Census of Employment, the Northern Ireland Quarterly Employment Survey, regular and miscellaneous proving exercises and other surveys conducted by Statistics Research Branch, DED and ONS.

Unproved/Unproven Unit

Conversely, an unproved/unproven unit is any enterprise on the IDBR which does not have a local unit attached to it and which has not been selected for the Northern Ireland Census of Employment. Some enterprises may be limited companies but have 0 employees, the business being conducted by working directors or staff paid by another business which the parent enterprise owns. Such enterprises are proven, as are self-employed persons and partnerships who may also have 0 employees.

IDBR section in Statistics Research Branch continually prove new businesses and also issue forms to those businesses which are imputed (from VAT and/or PAYE information) to have 20 or more employees.

ABBREVIATIONS

CRN Company Registration Number

DCA District Council Areas

IDBR Inter Departmental Business Register

ONS Office for National Statistics

PAYE Pay As You Earn

SIC Standard Industrial Classification

VAT Value Added Tax