



Survey of FE College Leavers 2024/25

Frequently Asked Questions

What is the Survey of FE College Leavers?

The Survey of Further Education College Leavers is a Northern Ireland wide survey to help understand the destination of students after gaining their FE qualification. Issued six months after qualifying, it provides an insight into career destinations, skills development and immediate added value of a further education qualification.

Why should I complete the survey?

By taking part in the survey, you could inspire the students of tomorrow! Your voice, along with your fellow students will collectively impact the future of Further Education. Your responses will help your college, and the Department for the Economy (DfE) understand the choices you've made since gaining your qualification and how this reflects the skills/qualification you gained through completing your course.

For those that complete the Survey, you will be entered into a prize draw for an iPad.

Plus, it only takes two minutes to complete!

What will I be asked about?

The Survey is issued approximately six months following course completion and asks about your circumstances both before and after gaining your FE qualification e.g. 'Working', 'Studying', 'Unemployed' or 'Doing something else'. Depending on your current activity there are several follow up questions, however the maximum number of questions is nine. All questions are tick box, with no open text. Therefore, you can complete in two minutes or less.

For a full list of questions please see the [2024/25 Survey of FE College Leavers questionnaire available on the DfE website](#).

When will I be surveyed?

The Survey will be issued approximately six months after course completion.

For the 2024/25 Survey, the Survey will be launched on **Monday 2nd March**.



Department for the

Economy

An Roinn

Geilleagair



How will I be surveyed?

An advance notice email will be issued to you from your college. On the day of survey launch (Monday 2nd March), you will receive an email from:

'Department for the Economy (DfE) <invitation@online1.snapsurveys.com>'

The email will contain a unique link for you to complete the survey. You can take the survey on most devices so you can complete it on the morning commute, on a quick tea/coffee break or when you get a spare few minutes in your day.

If you don't get the chance to complete it on the day you receive it, don't worry, we will send reminders to make sure your voice isn't missed.

Who will contact me about the survey?

The Department for Economy will contact you via email on the day of survey launch (Monday 2nd March). The email will come from:

'Department for the Economy (DfE) <invitation@online1.snapsurveys.com>'

Top Tip: Add this to your safe senders list, so it doesn't get lost in your inbox.

How long will the survey take to complete?

The survey is very short, with a maximum of nine questions. It won't even take two minutes to complete.

What are the results of previous surveys?

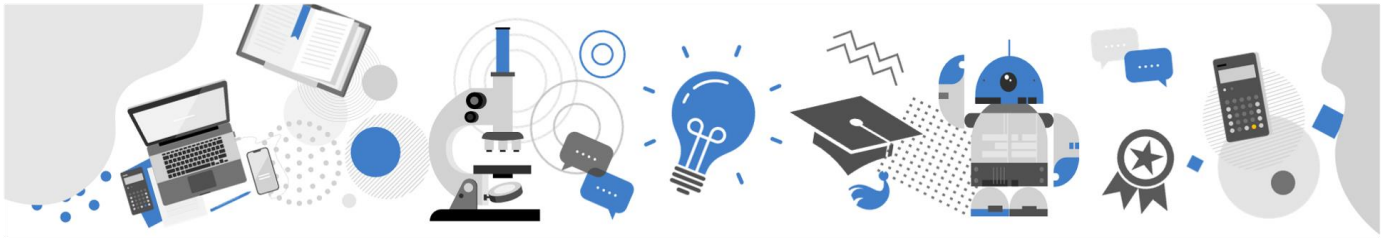
The results of previous surveys are all fully published and can be found on the Department for the Economy's website: [Further education research | Department for the Economy](#).

Who runs the survey?

The Department for the Economy (DfE) is undertaking the Survey in conjunction with your Further Education College.

How will my response be used?

Your individual answers won't be identifiable or used to make decisions about you. However, your responses collated with all your fellow students will be used by your college, DfE and regulatory bodies for research and statistical purposes. In turn this will help shape education policy and the future of education.



Are my details held securely?

Yes, DfE takes personal information security extremely seriously and will keep your data secure. All information will be handled in compliance with the [General Data Protection Regulation \(GDPR\)](#).